



Cornetto Soft

Cornetto Soft Dispenser Customer Fitting Instructions

**To be used when
the dispenser is
being fitted to a
standard counter**

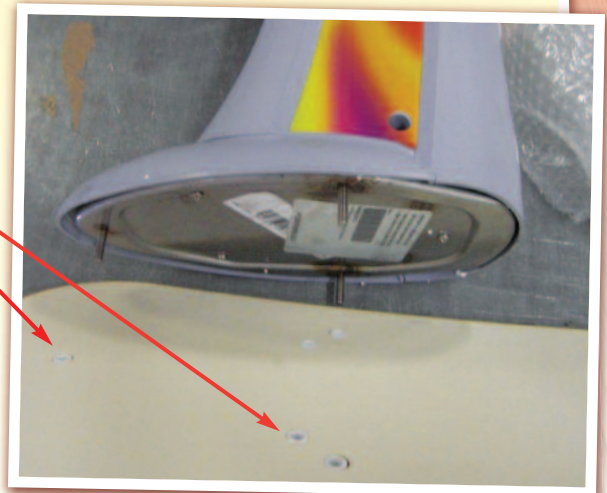
Parts supplied

- 1 x Dispenser
- 1 x Dispenser shelf with attached adhesive strips
- 3 x M6 nuts
- 1 x M10 spanner
- 1 x Instructions



Assembly

- Lay the dispenser on its side on a suitable working surface.
- Fit the shelf onto the dispenser making sure the adhesive tape is on the lower face, locate the three studs on the base of the dispenser through the three corresponding **holes** in the shelf.
- Secure the shelf with the 3 x M6 using the spanner provided.
- Identify the spot where the dispenser is to be located making sure the area is flat, dry and free from grease.
- Remove the backing tape from the adhesive strips on the base of the shelf, position the dispenser and press down firmly on the base.
- Check that the unit is secure and safe to operate.
- Please note that the adhesive strips are very strong and no liability can be taken by Wall's Refrigeration Solutions or Unilever (UK) Limited for any damage to property that may be caused through their use.
- If you require any help or advice contact Wall's Refrigeration Solutions : **0845 127 2527**



Unilever UK Ltd, Unit 2A, East Tame Business Park, Rexcine Way, Talbot Road, Hyde, Cheshire, SK14 4GX
Phone: 0845 127 2527 Fax: 0161 366 7374 Email: sales@wallsrefrigerationsolutions.com
www.wallsrefrigerationsolutions.com

Orders subject to Wall's Refrigeration Solutions terms of business. See www.wallsrefrigerationsolutions.com for details
Unilever UK Limited Registered in England & Wales No 00334527 Registered office: Unilever House, Springfield Drive, Leatherhead, KT22 7GR

